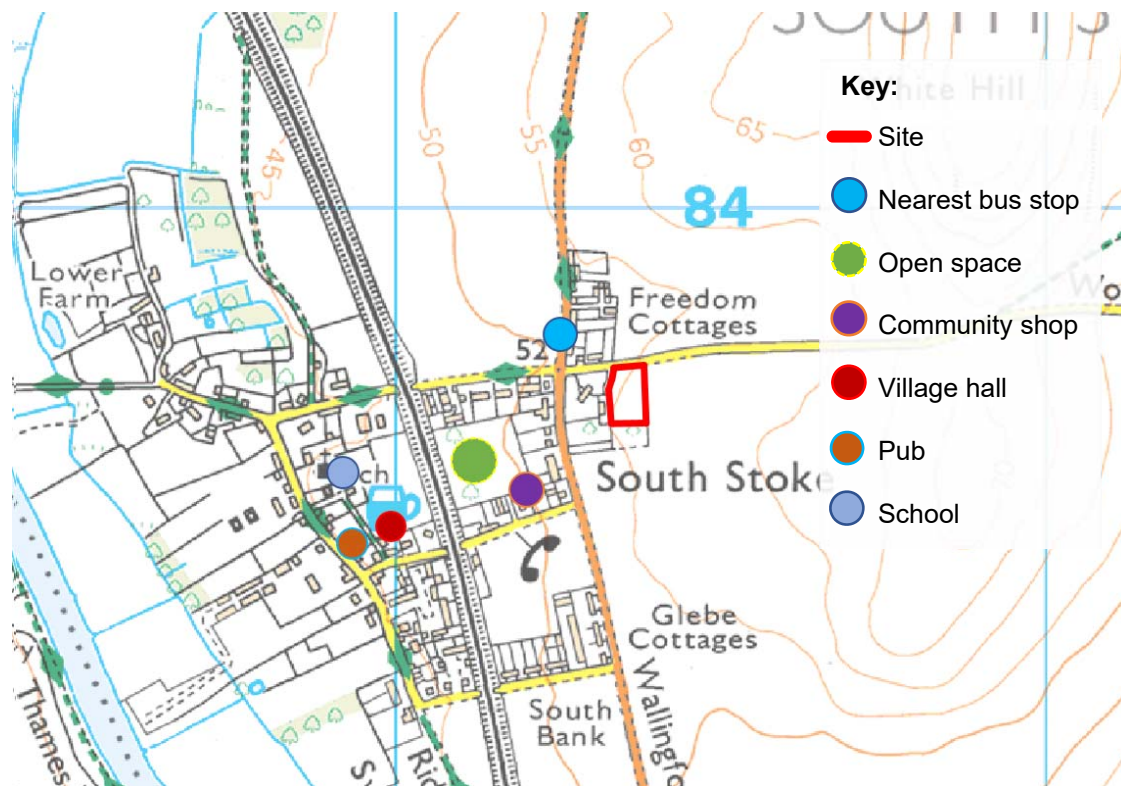
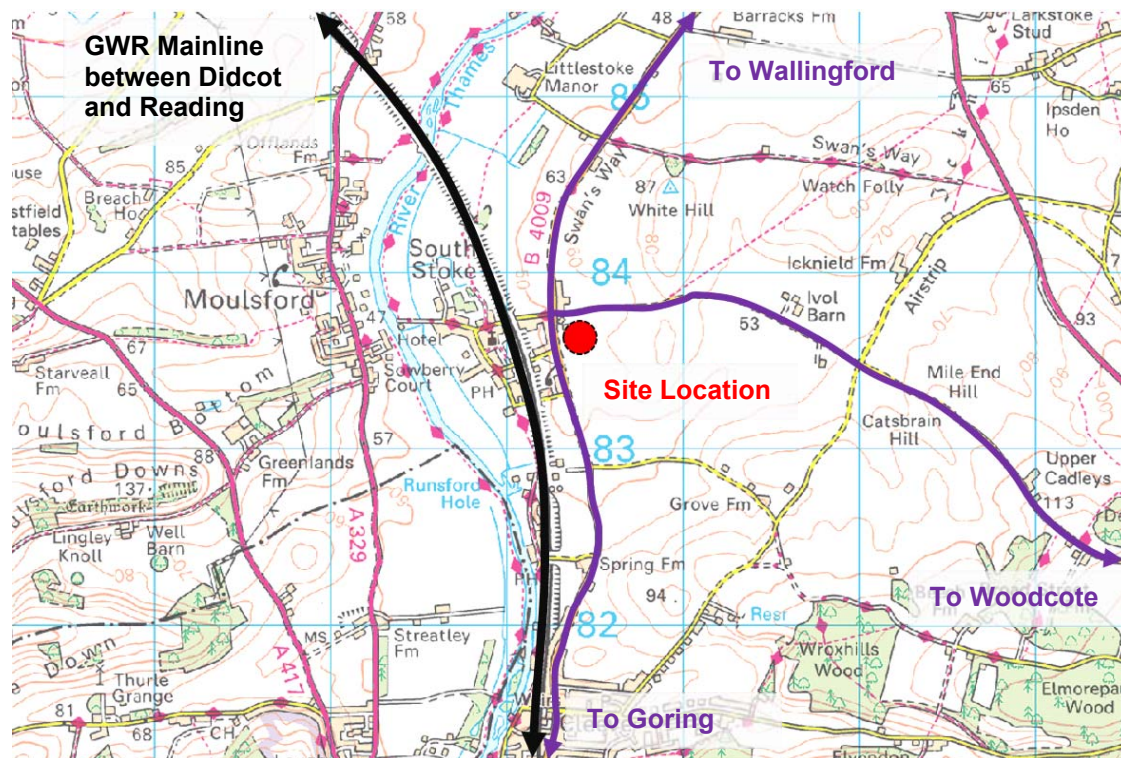


Appendix 1

APPENDIX 2 : SITE CONTEXT PLANS



NORTH

0 10 20 M

1:500 @ A4

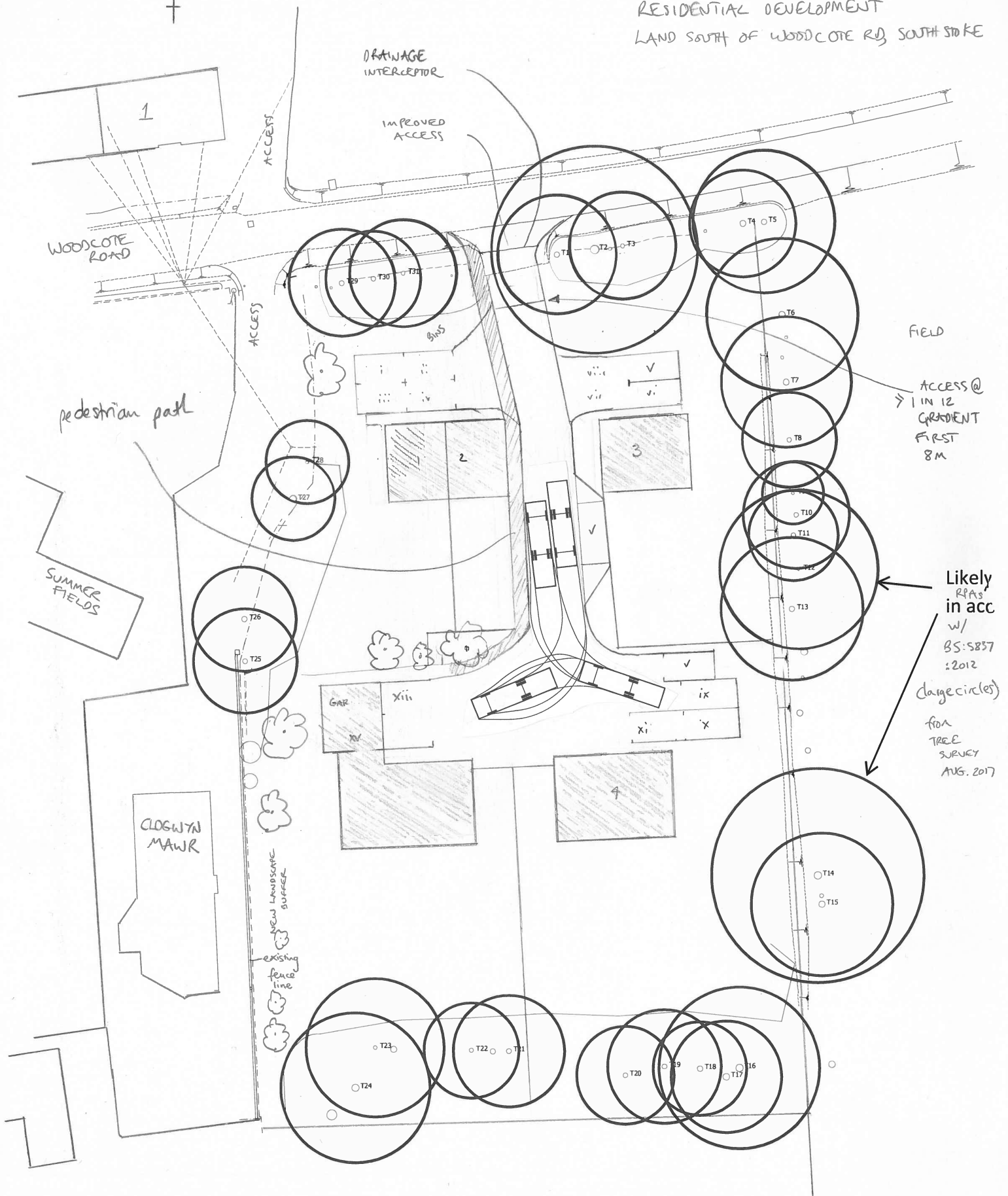
NOV 2017

S977/B01a

Appendix 3

INDICATIVE LAYOUT
RESIDENTIAL DEVELOPMENT

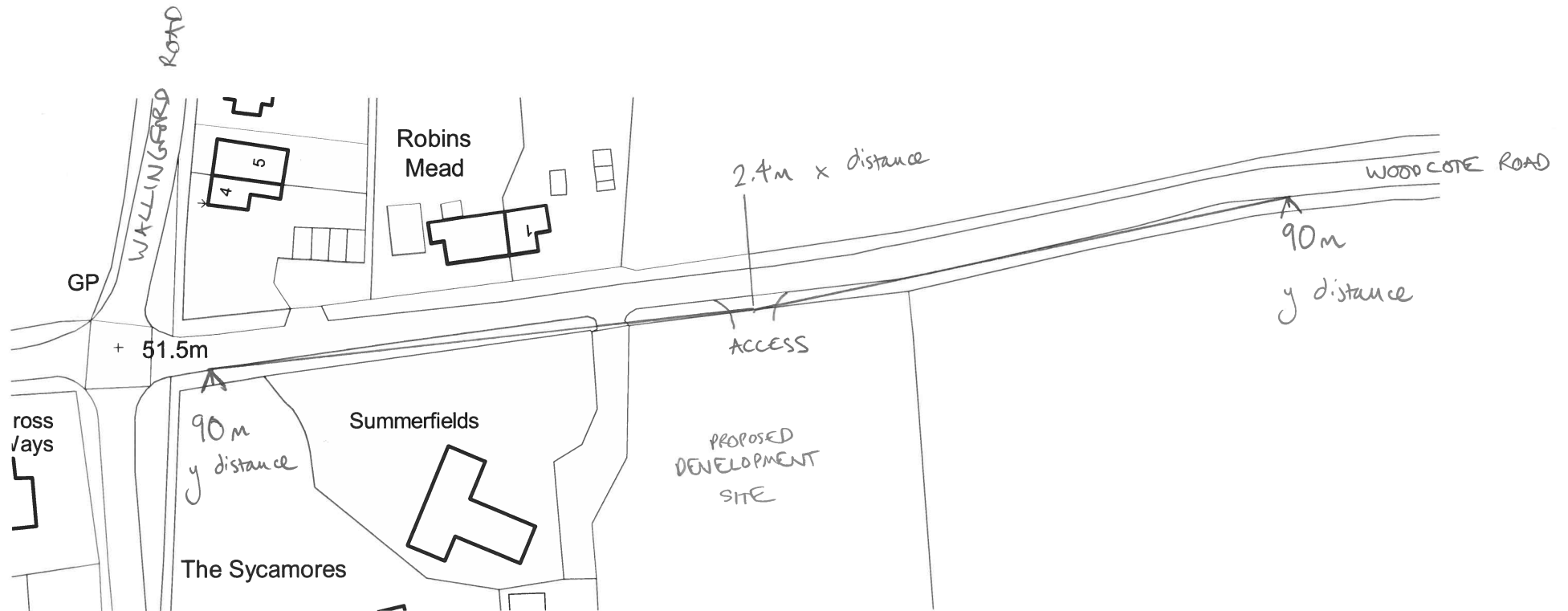
LAND SOUTH OF WOODCOTE RD, SOUTH STOKES



Showing fire tender turning as per DB32 page 86



Appendix 4



Vision plays

1:1000 scale @ A4

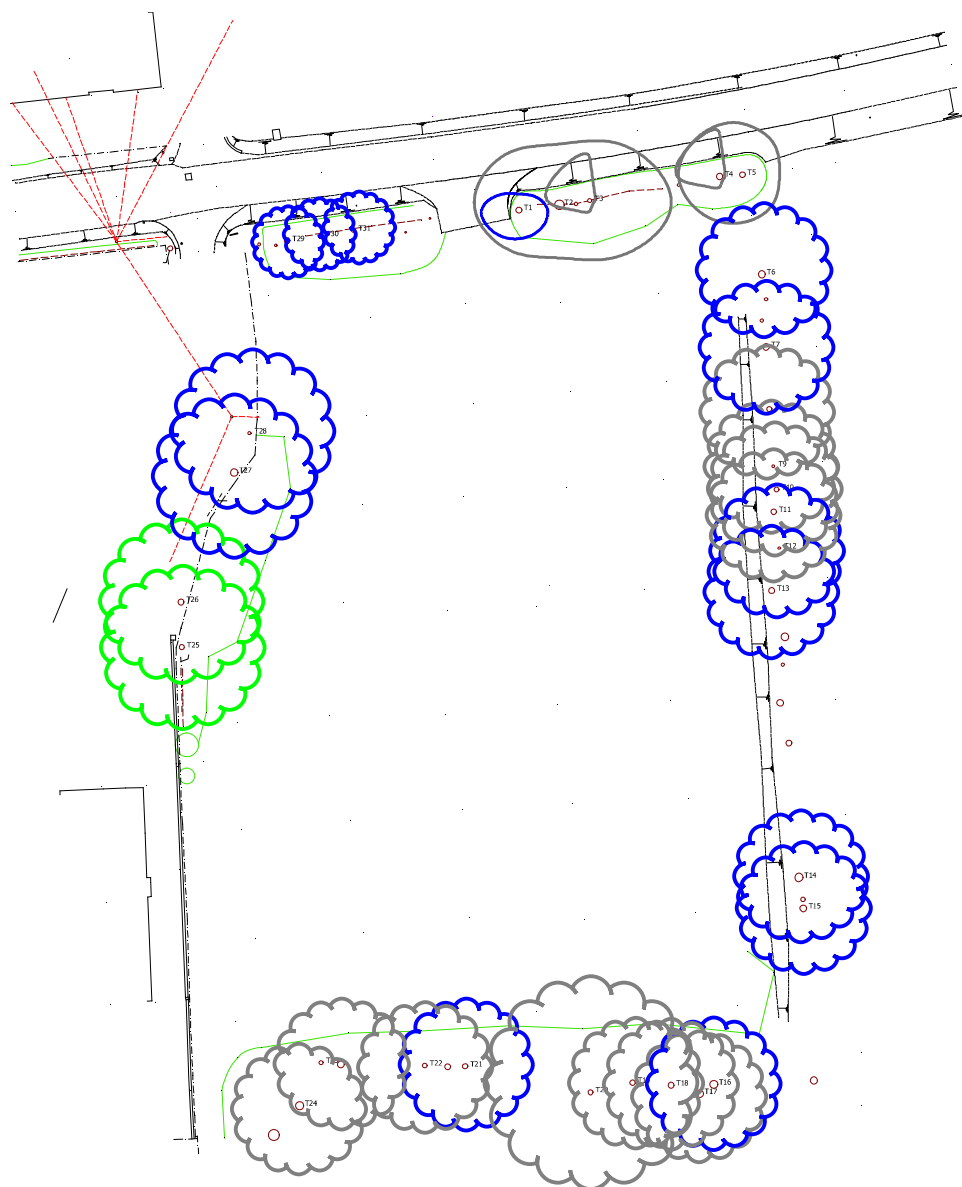
S977/vis

AUGUST 2017

Appendix 1 - Tree Quality Assessment
Land off Woodcote Road, South Stoke
August 2017

Key

- Trees of high quality and value in accordance with BS5837:2012
- Trees of moderate quality
- Trees of low quality
- Trees in decline



Appendix 5



Scale 1:500 on A3

0m 20m

This page is intentionally left blank